



Riverscape

P A R A L O W I E



FIXED PRICE HOUSE & LAND PACKAGE

\$755,000*

Image for illustrative purposes only.

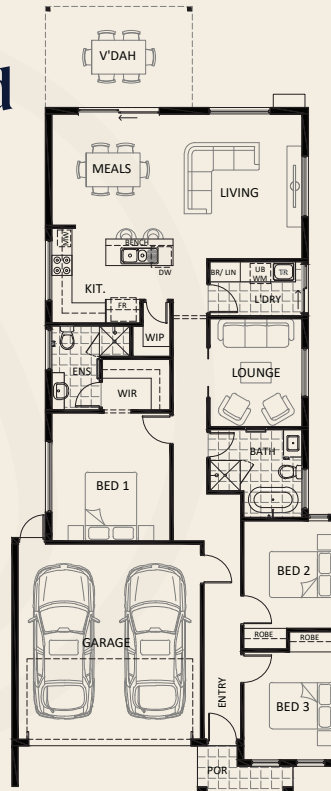
Lot 2 Greentree Boulevard

3
 2
 2
 2
 323



Artists Impression

DESIGN	ANDO
AREAS	m2
Living	127.11
Garage	34.94
Porch	3.27
Verandah	13.05
TOTAL	178.37



Package Inclusions

- Choice of 2 colour schemes
- 2.7m high ceilings throughout
- 2.4m high doors throughout
- 820mm Timber front door*
- Bed 1 with walk in robe and ensuite
- Spacious bedrooms (2 & 3) with built in robes
- Quality Westinghouse Stainless Steel kitchen appliances
- Overhead cupboards to kitchen
- Laminate flooring to main areas
- Carpet to all bedrooms and robes
- LED lights throughout
- Daikin reverse cycle ducted air conditioning
- Rear Verandah*
- Boundary fencing
- Soft landscaping
- Stormwater Allowance
- 3000L Rainwater tank
- Tiled front porch
- Perimeter concrete paving inc driveway
- Auto panel lift garage door to front
- Colorbond roof and fascias
- Instantaneous Rinnai 26L gas hot water unit
- Physical termite protection barrier
- 25 Year Structural Guarantee
- 3 Month Maintenance Period

Stone benchtops and full height tiling to bathrooms available as optional upgrade. Ask us for details.

* Terms & Conditions apply. All floor plans, images and elevations are indicative and for illustration purposes only. All areas are approximate estimates only. Timber entrance door (pictured) and rear verandah available as optional upgrade from the stated fixed price. Price may vary depending on various factors including, but not limited to, selections, engineering, council and utility requirements. All packages are subject to final council approval. Details are subject to change without notice.

E&OE. Lofty Building Group Pty Ltd ABN 82 159 090 678, BLD 271885, RLA 258241.

Ph: 0431 888 905 | enquiries@myriverscape.com.au

www.myriverscape.com.au



Exclusive Build Partner **Lofty**